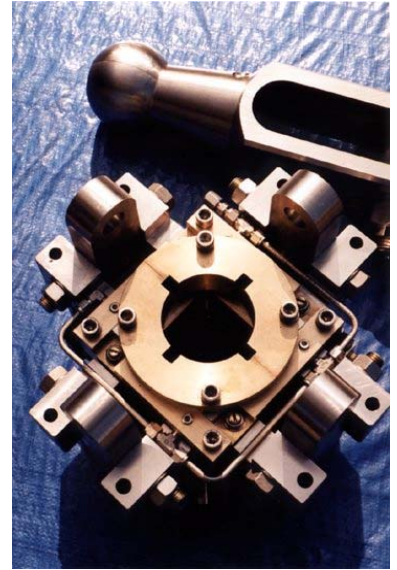
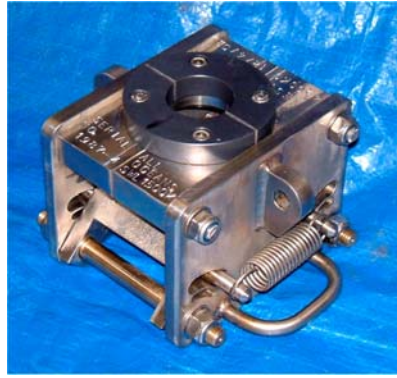
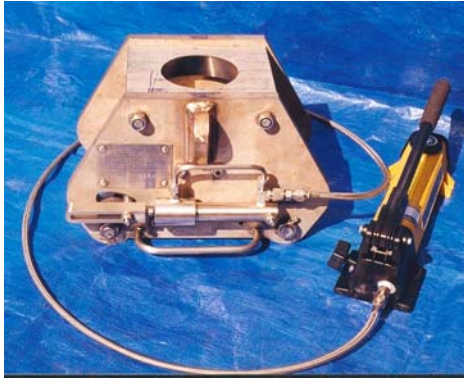
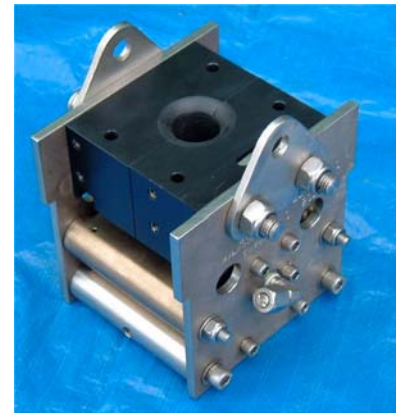


# Load Latches

**Flexible and cost-effective solutions . . .**



- ◆ Air gap and splash zone load latching
- ◆ Equally suitable for Go-Devil operation
- ◆ ROV, AUV, ADS, TMS latching
- ◆ Can be assembled around a cable
- ◆ Automatic latching
- ◆ On load release protection
- ◆ Hydraulic or lanyard operation
- ◆ Designs to suit existing latch heads
- ◆ Load ratings as required
- ◆ 3g design load & proof load tested
- ◆ DNV Approved & Certified
- ◆ Integration & Application engineering
- ◆ No lube / water lubricated low maintenance



**MECHANICAL HANDLING UNDER WATER**  
**. . . extend the capabilities of your business**  
**ALL OCEANS ENGINEERING Ltd.**